

# Engineering Program Review Data Spring 2020

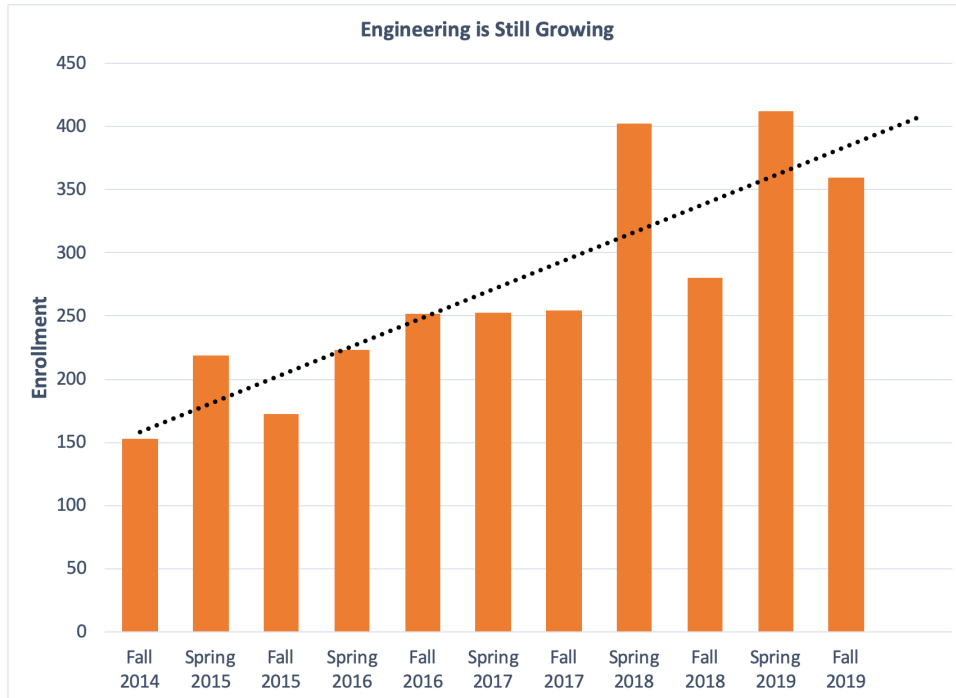


Figure 1 - Engineering continues to show growth even as overall enrollment for the college has been in decline

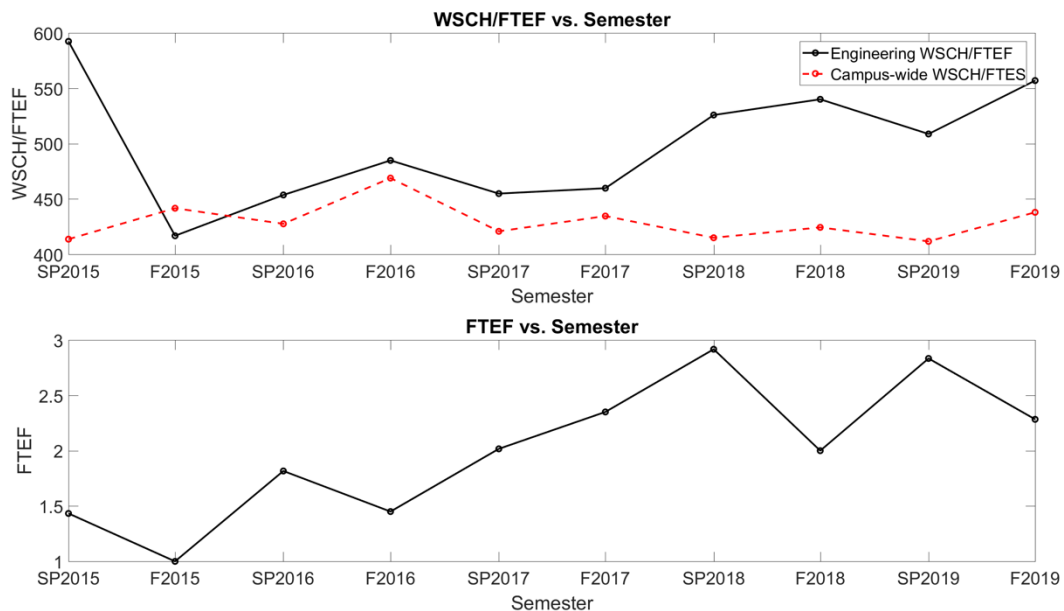


Figure 2 - Engineering has managed to grow the program's FTEs while still maintaining efficiency and consistently providing enough load for two full-time faculty. FTEF data does not include cross-listed courses.

# Engineering Program Review Data Spring 2020

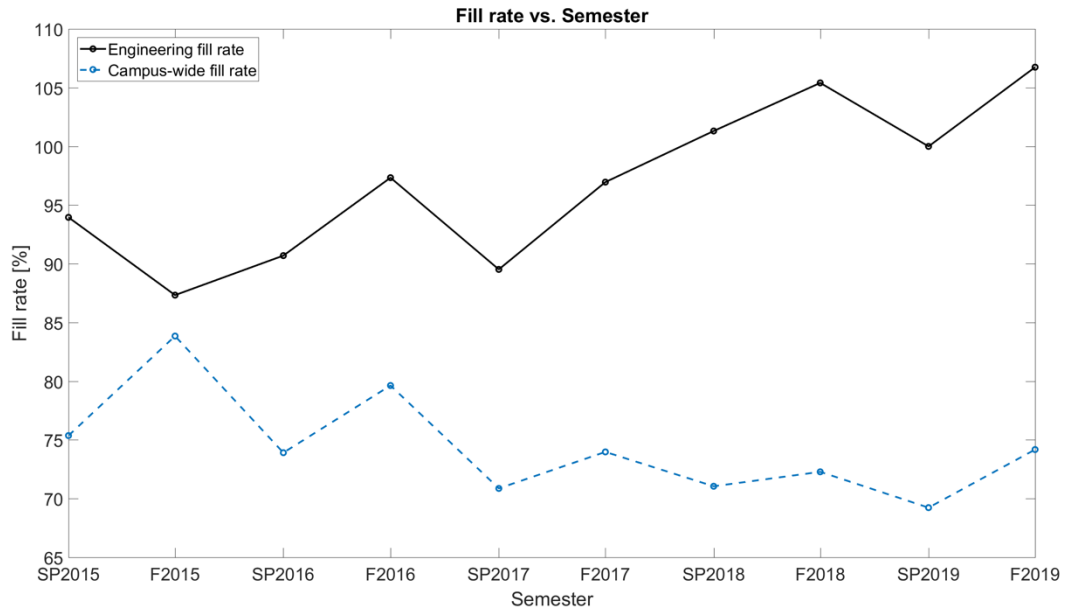


Figure 3 - Fill rates have continued to exceed the college average.

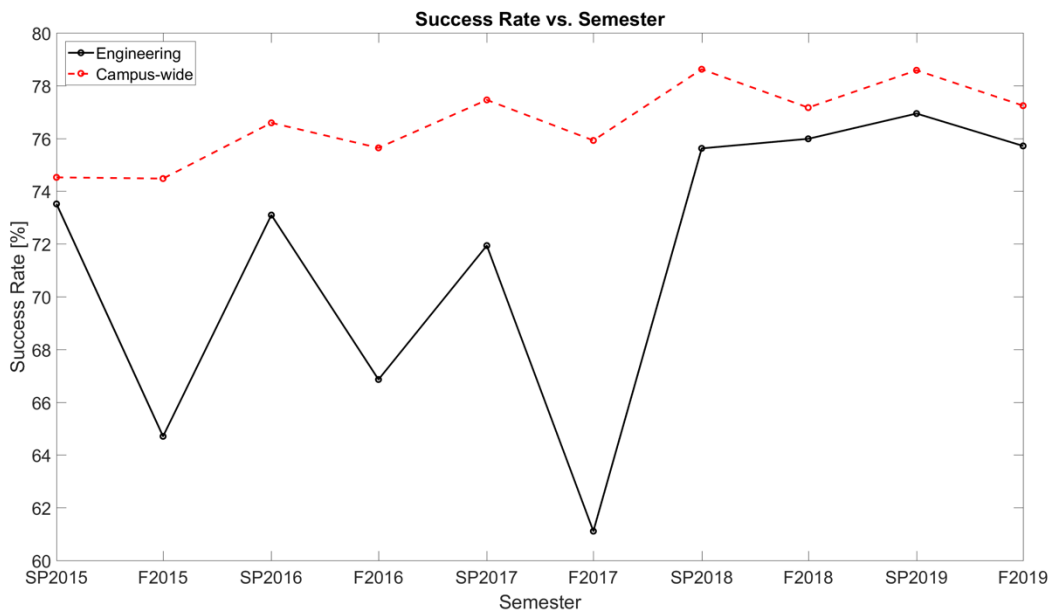


Figure 4 - Engineering classes are known for their technical difficulty, but improvements in course design and teaching have worked to bring the success rate for engineering closer to that of the college.

# Engineering Program Review Data Spring 2020



Figure 5 - Engineering continues to have poor representation among women (although both genders exhibit similar success rates). This is a common problem in the field, however.

# Engineering Program Review Data Spring 2020

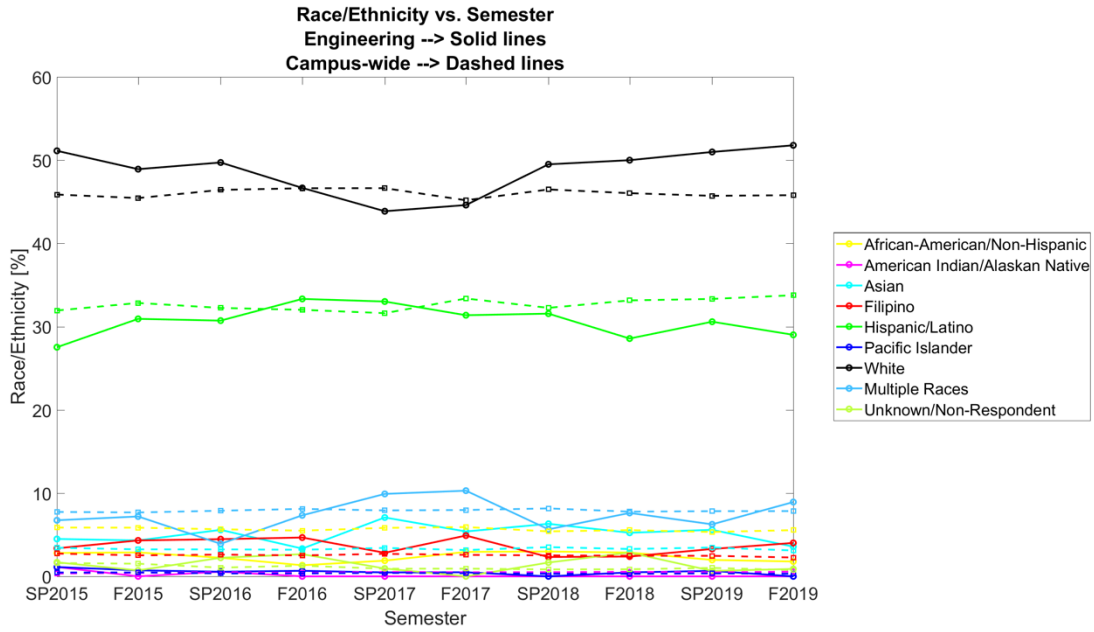


Figure 6 - Ethnic representation in Engineering vs the college.

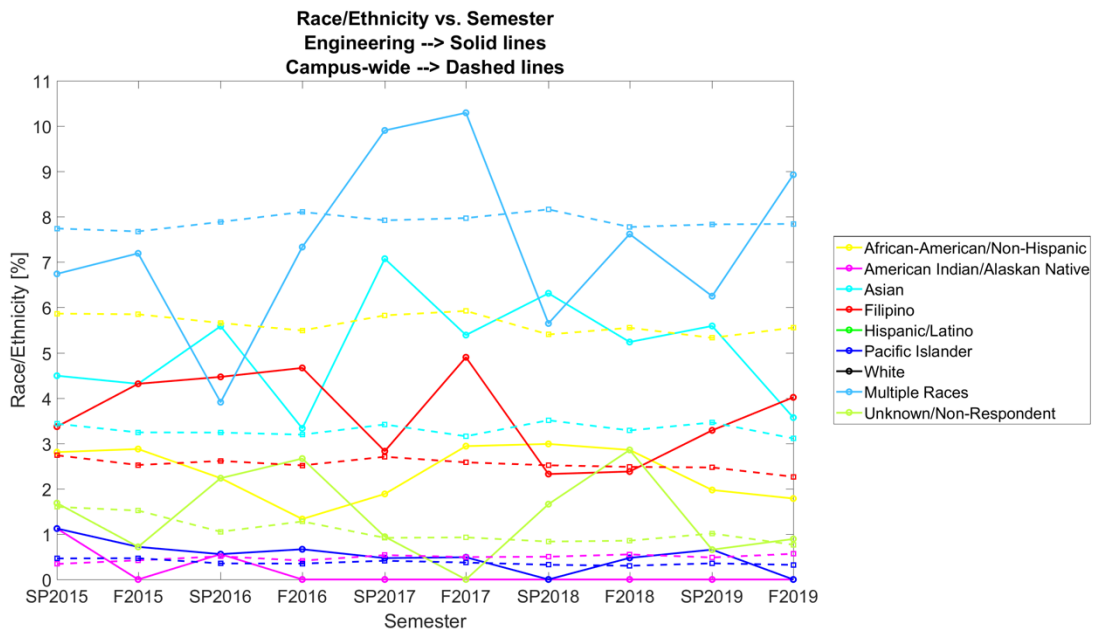


Figure 7 - A zoomed in representation of college vs Engineering ethnic representation.

# Engineering Program Review Data Spring 2020

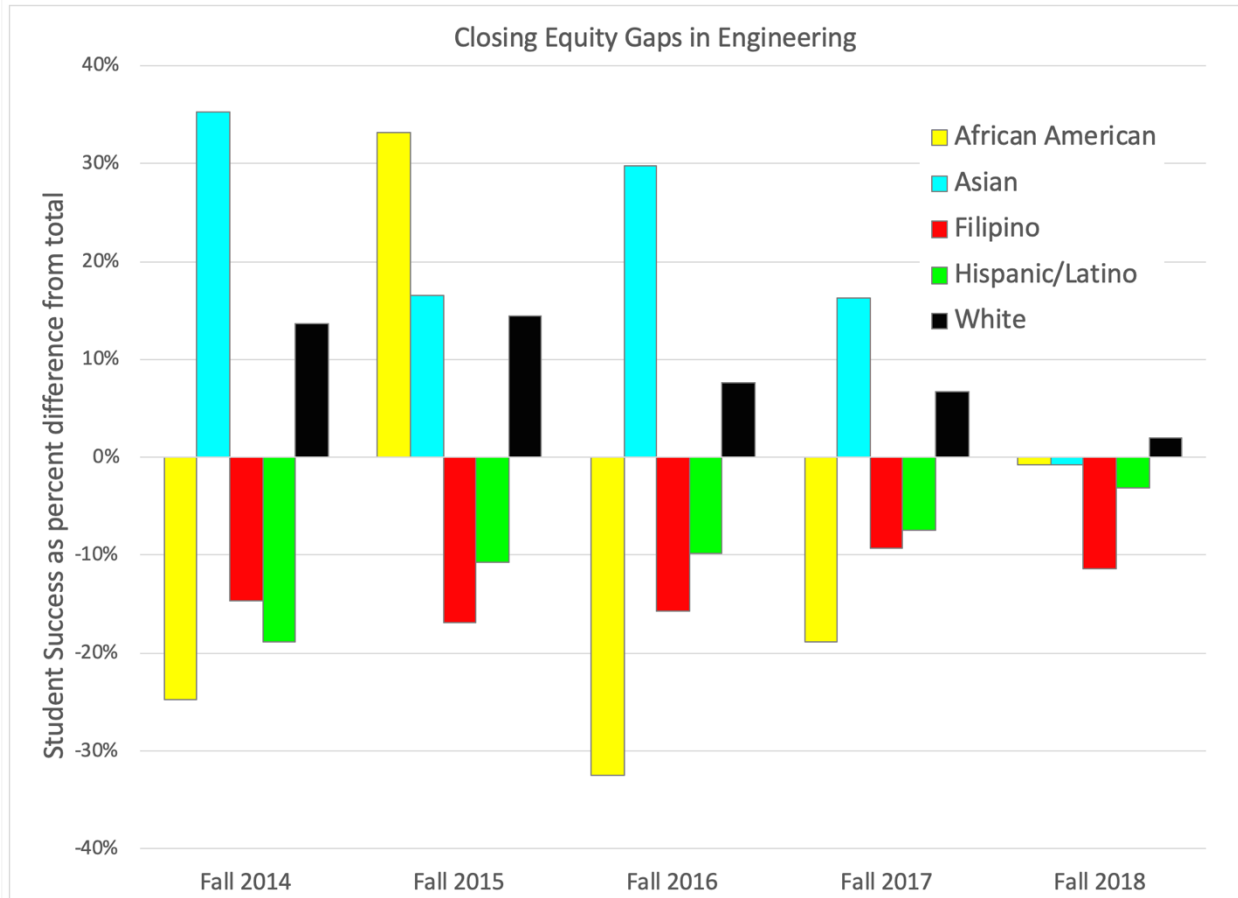


Figure 8 - Equity gaps in engineering as shown by plotting the difference between the total success rate and the success rate of individual ethnic groups. Not shown are any groups who do not deviated significantly from the average, or represent enough total students to have significant statistical meaning on in this format.

# Engineering Program Review Data Spring 2020

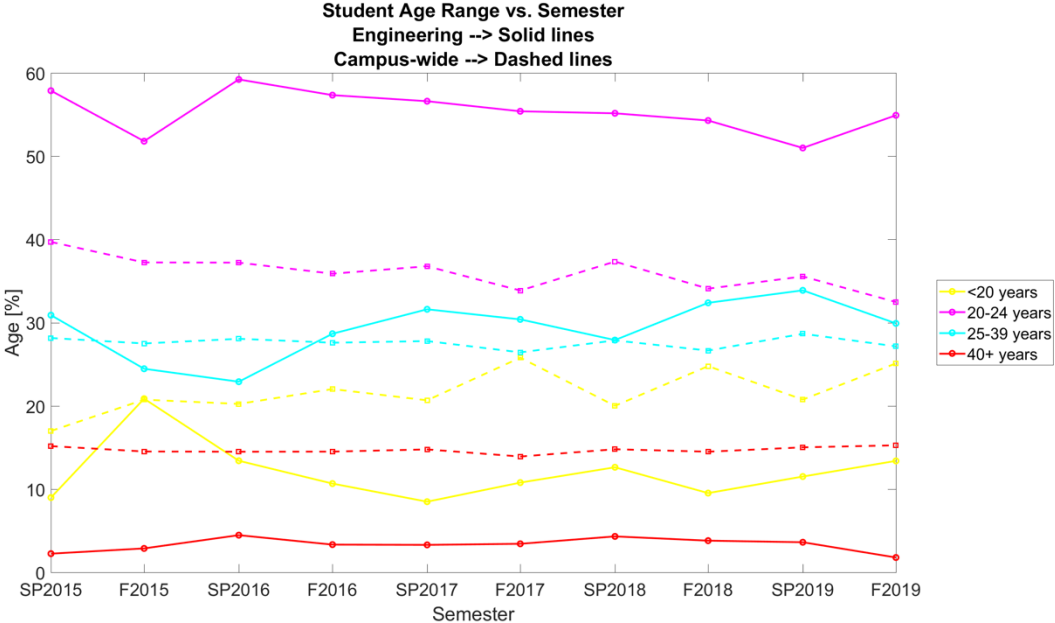


Figure 9 - Engineering students skew young but not that young.