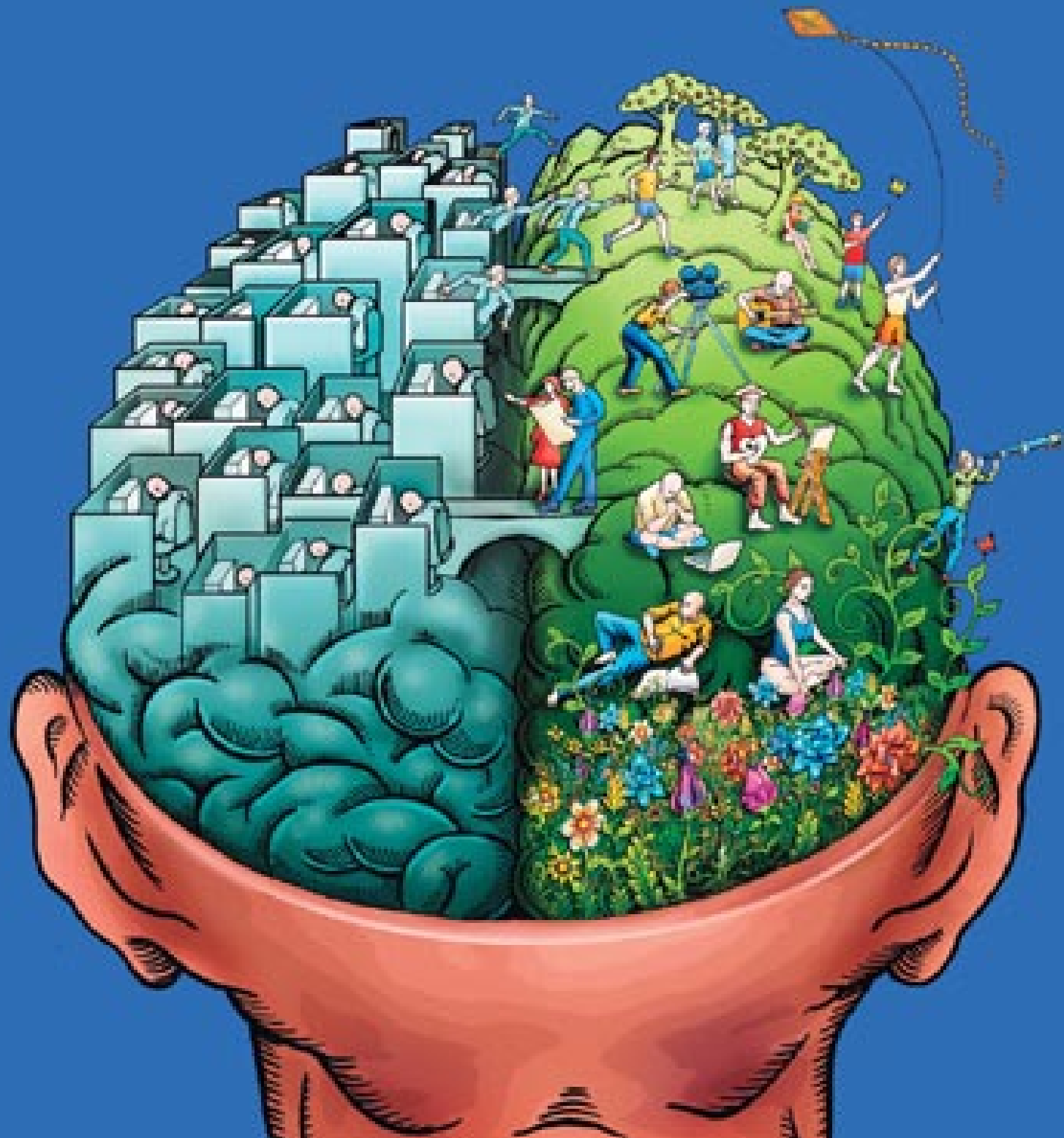
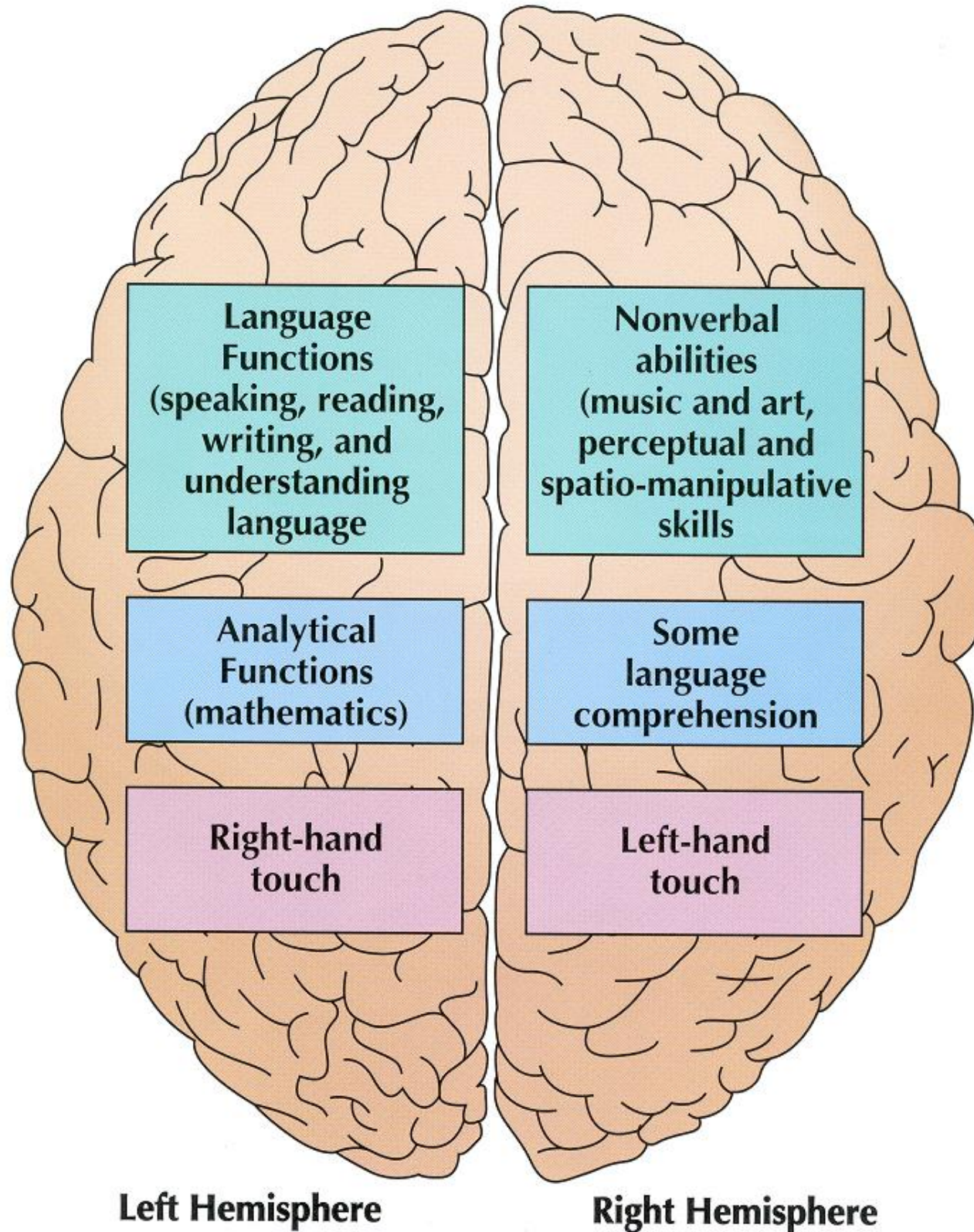
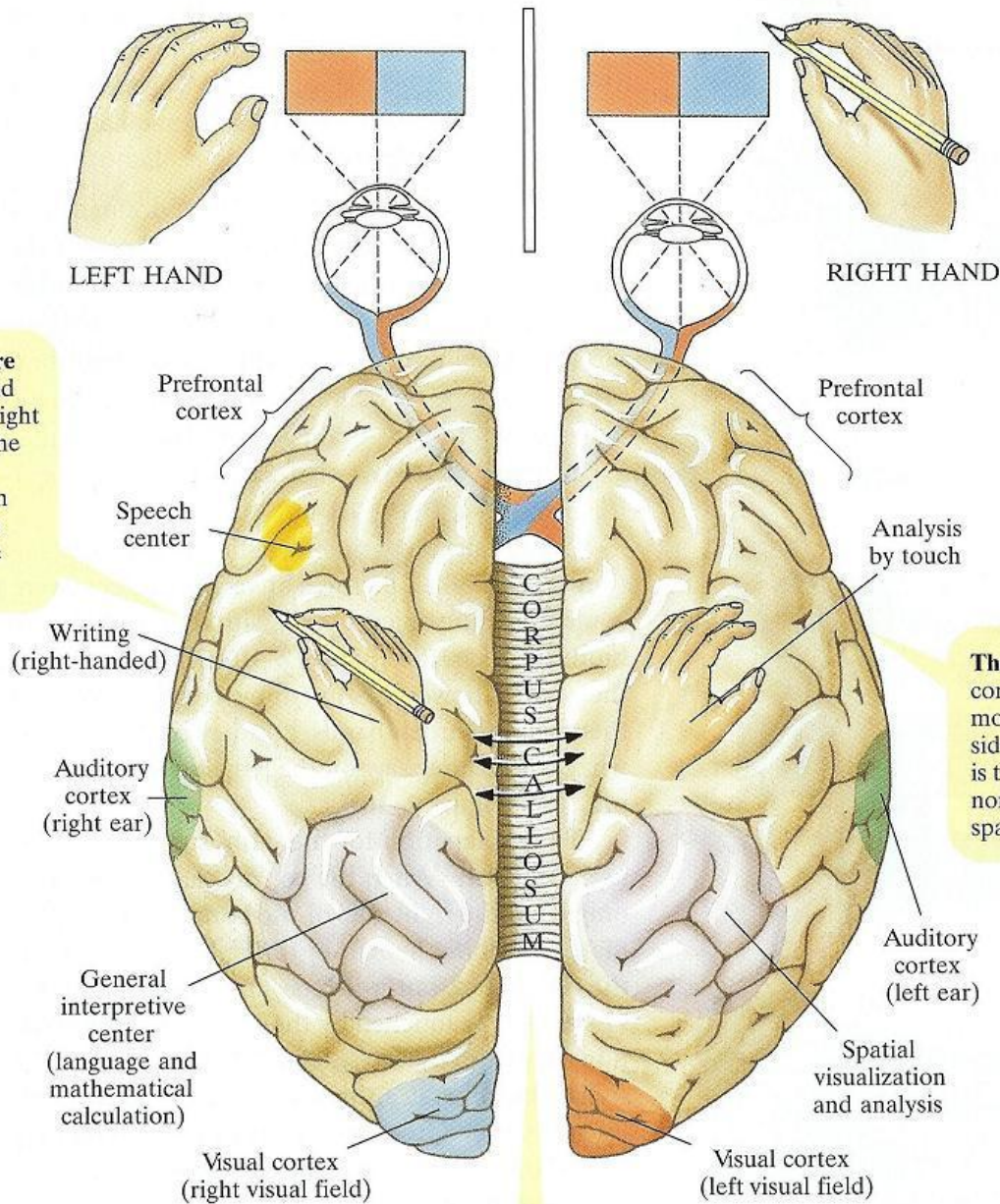


The cerebral cortex of the human brain is very crumpled. This allows more cortical surface area to fit inside our rather small skull. The actual surface area, if unfolded, is about the size of four sheets of notebook paper.





The left hemisphere controls writing and movement of the right side of the body. The left hemisphere is usually dominant in language and tasks involving symbolic reasoning.



The right hemisphere controls touch and movement of the left side of the body and is typically superior at nonverbal, visual, and spatial tasks.

The corpus callosum permits the exchange of information between the two hemispheres.

corpus callosum A thick band of nerve fibers connecting the left and right cerebral cortex.

Psychology in Action: Handedness—Are You Dexterous or Sinister?

Right-Handers

Brain Dominance

97%
Left brain

3%
Right brain

Advantages

Right-handed world

Longer lifespan

Left-Handers

Brain Dominance

68%
Left brain

19%
Right brain

12%
Both sides

Advantages

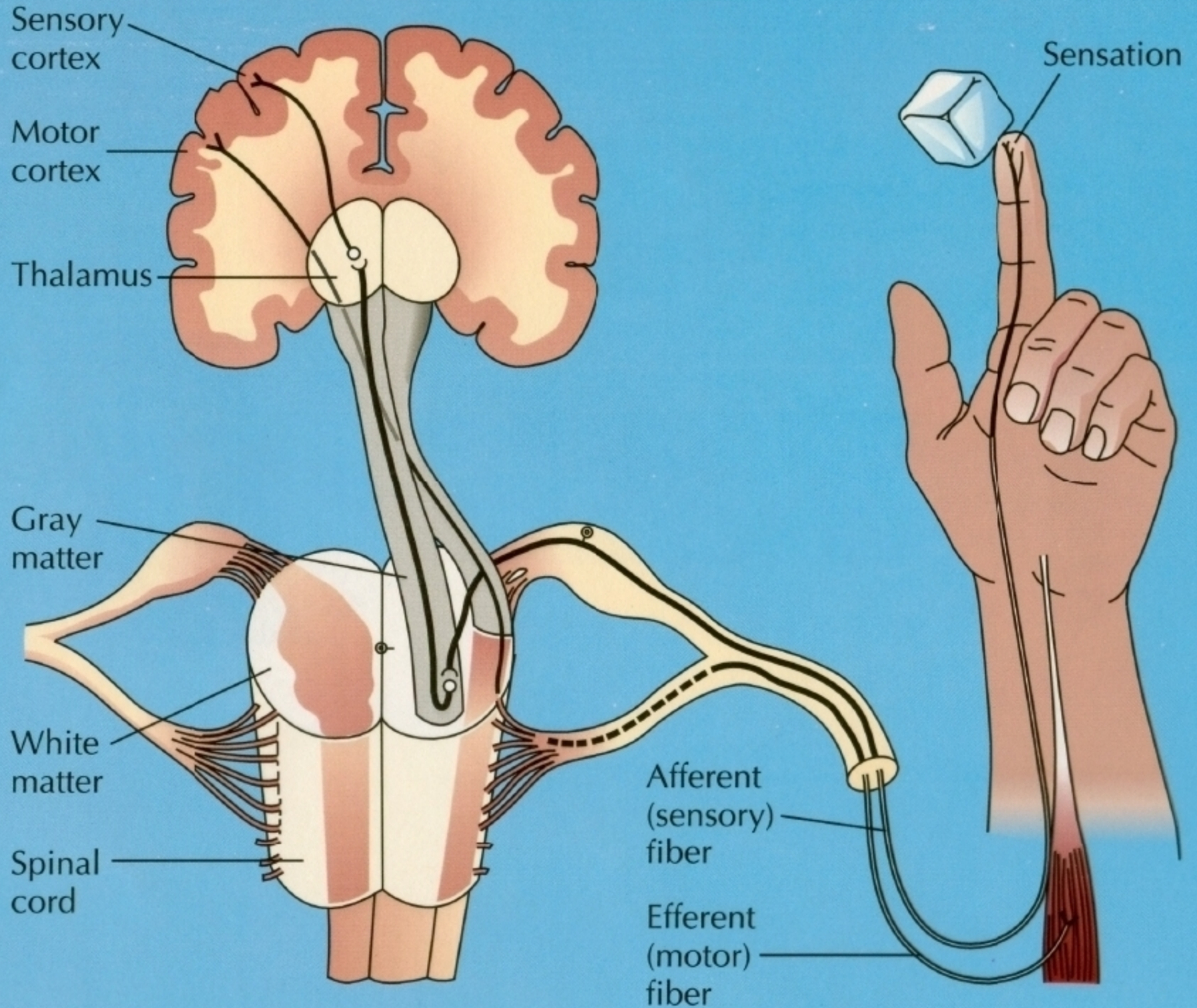
Superiority in art

Less lateralization

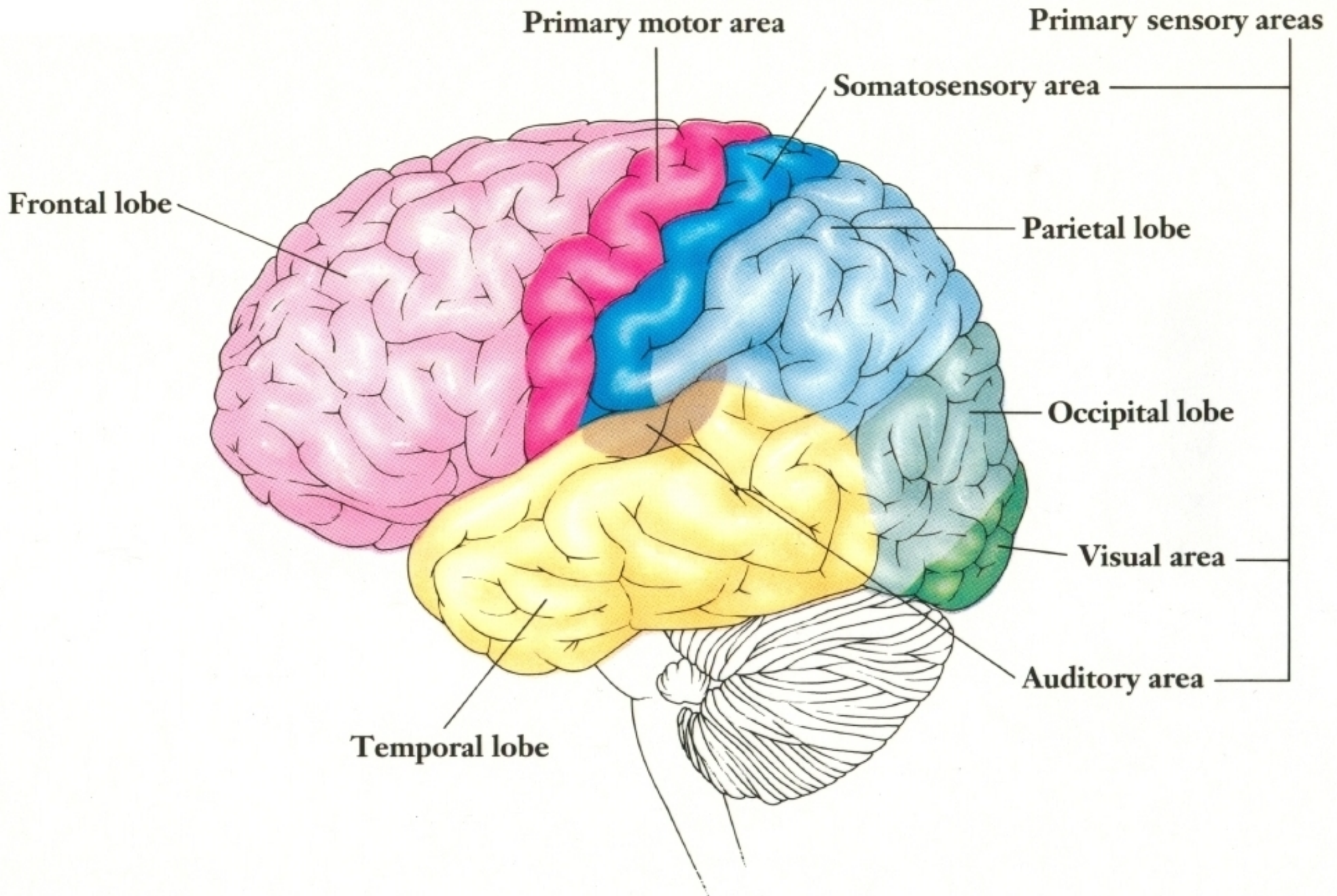
Less language loss
after brain injury

Better math skills

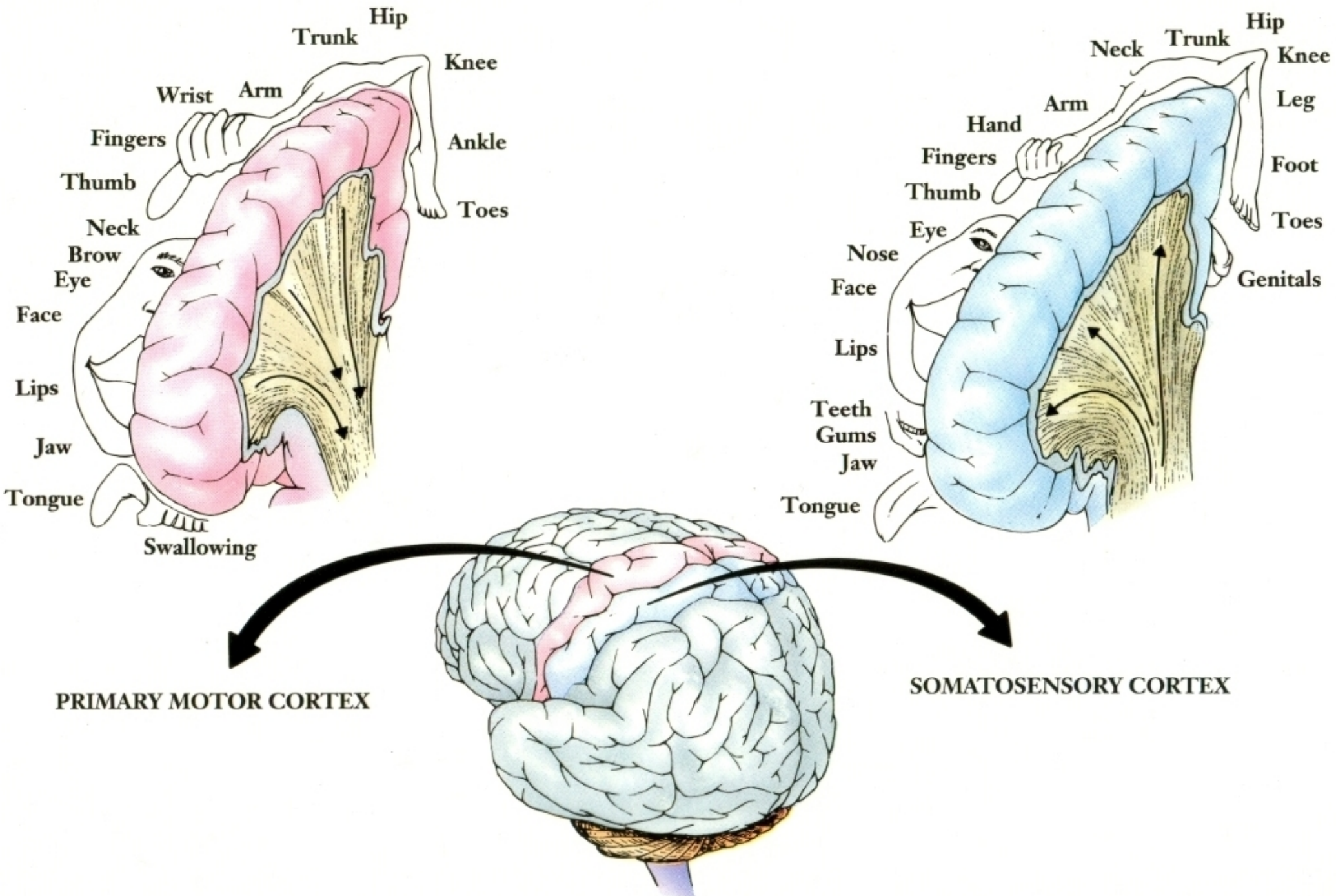
Sensory and Motor Pathways



The Cerebral Cortex



Organization of the Primary Motor Cortex and Somatosensory Cortex



THE FAR SIDE® BY GARY LARSON

© 1986 FarWorks, Inc. All Rights Reserved/Dist. by Creators Syndicate

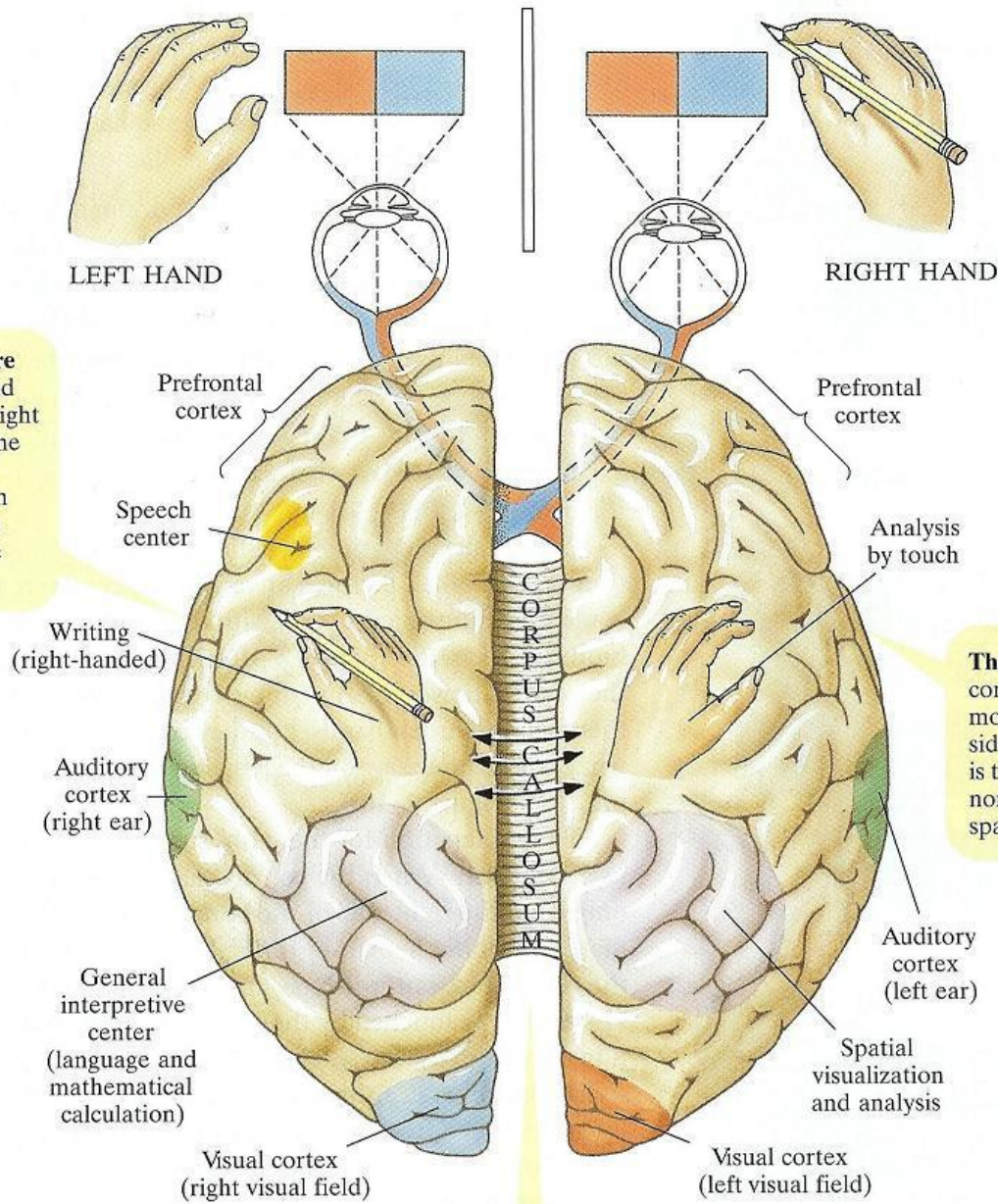
Larson



The Far Side® by Gary Larson © 1986 FarWorks, Inc. All Rights Reserved.
Used with permission.

**“Whoa! *That* was a good one! Try it Hobbs—
just poke his brain right where my finger is.”**

The left hemisphere controls writing and movement of the right side of the body. The left hemisphere is usually dominant in language and tasks involving symbolic reasoning.



The right hemisphere controls touch and movement of the left side of the body and is typically superior at nonverbal, visual, and spatial tasks.

The corpus callosum permits the exchange of information between the two hemispheres.

corpus callosum A thick band of nerve fibers connecting the left and right cerebral cortex.

The Visual Pathway

