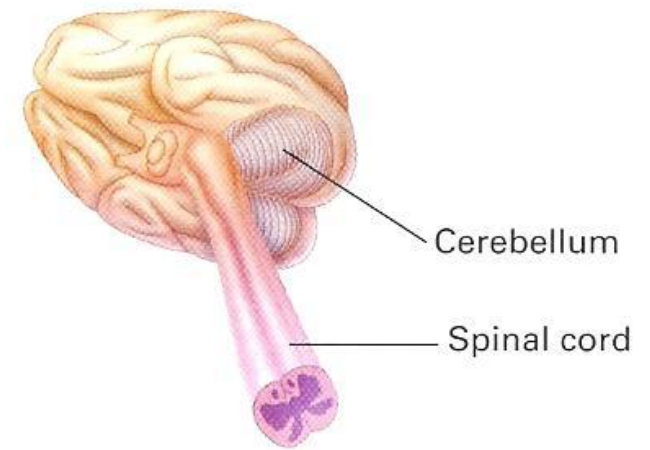
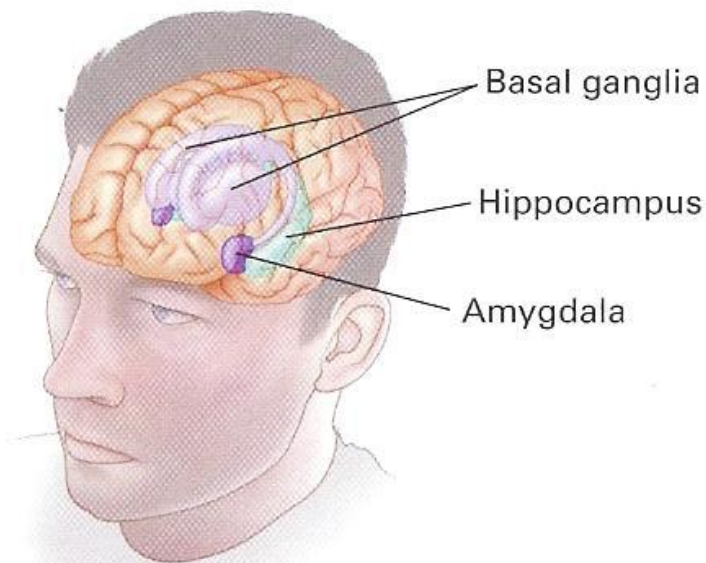


(a)



(b)



(c)

### Central Core Brain Structures

The central core of the brain includes (a) the brain stem (which includes the medulla), the thalamus attached to the top of the brain stem, and the reticular formation which passes through both; (b) the cerebellum, which extends from the back of the brainstem; and (c) the basal ganglia that surround the thalamus.

**Lateral view  
of brainstem**

